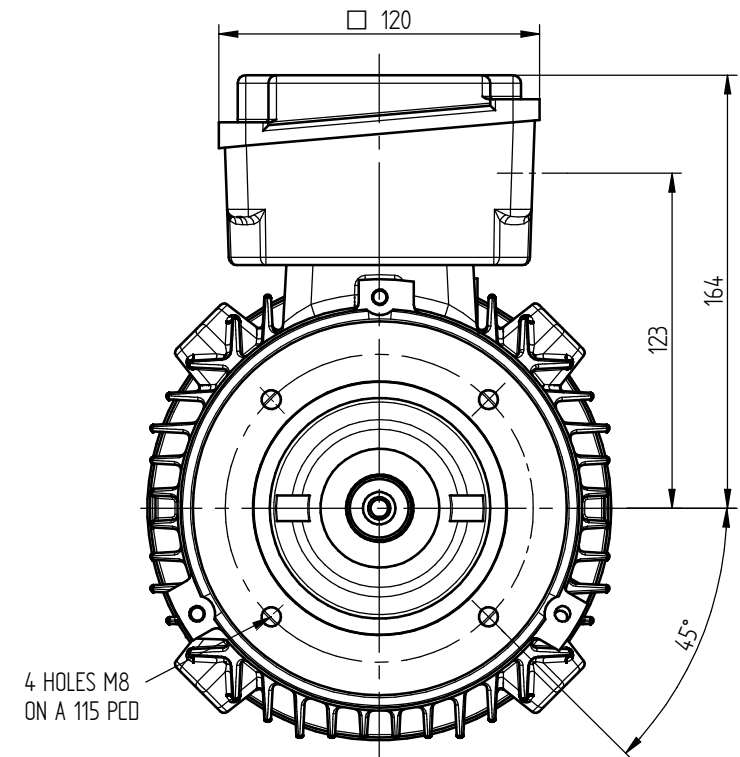


A-A
1:1



TERMINAL BOX POSITION:

- CAN BE ARRANGED AT EITHER 9, 12 OR 3 O`CLOCK.
- STANDARD TERMINAL BOX POSITION IS 12 O`CLOCK AS SHOWN.

CONDUIT ENTRIES:

- TERMINAL BOX CAN BE ROTATED AT 90° INTERVALS.

ALL MOUNTING DIMENSIONS: ISO 2768-mK ACC TO EN 22768-1/2

ALL DIMENSIONS IN MILLIMETERS



FIRST ANGLE
PROJECTION

**BROOK
CROMPTON**

Produced by ATB Tamei S.A. a company of **ATB**
Technology in Motion

SHEET
SIZE

A3

TITLE:

OUTLINE DIMENSION DRAWING TOTALLY ENCLOSED FAN COOLED
WP-DF90LX FRAME C FACE MOUNTED MOTOR

DRAWN

NAME

DATE

CHECKED

RG

16-05-19

SCALE

1:2

DRG. No.

WP-DF90LX B14

DRG. REF.

REVISION:

DATE: